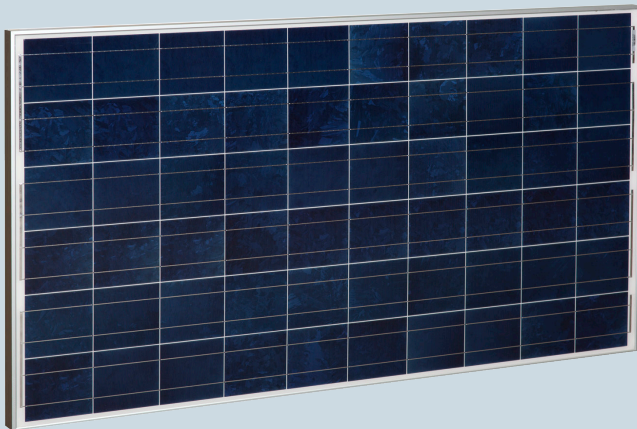




**High-quality and high-efficiency  
PV yields sensible solar**

**SUNIVA MV™ SERIES MULTICRYSTALLINE SOLAR MODULES**



**MV™ SERIES: MVX 60 CELL MODULES**

Suniva's MV™ series modules are made of world class quality multicrystalline solar cells to bring you a reliable yield even under demanding conditions. Offering industry-leading performance, MV™ modules have a positive power tolerance to ensure reliable output. Ideal for residential rooftop systems, and on or off-grid commercial and utility systems, MV™ modules provide excellent value, performance and reliability.

**Certifications<sup>1</sup>:**



**Engineering Excellence**

- Built with world class quality multicrystalline cells, providing excellent performance value
- Suniva's state-of-the art manufacturing facility features the most advanced equipment and technology
- Suniva is a U.S. –based company spun out from the Georgia Tech University Center of Excellence in Photovoltaics (one of only two such research centers in the U.S.)

**Features**

- Positive only power tolerance ensures predictable output
- Provides industry-leading 25 year linear warranty (with 10 year warranty on workmanship and materials)
- Marine grade aluminum frame
- Complies with IEC 61701 for salt mist corrosion resistance

**Quality & Reliability**

Suniva MV™ series modules are manufactured and warranted to our specifications assuring consistent high performance and quality worldwide.

Our specifications include:

- Rigorous quality management
- Performance longevity with advanced polymer backsheet
- Produced in an ISO 9001: 2008 facility
- System and design services available

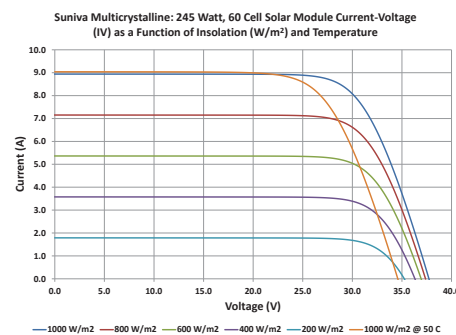
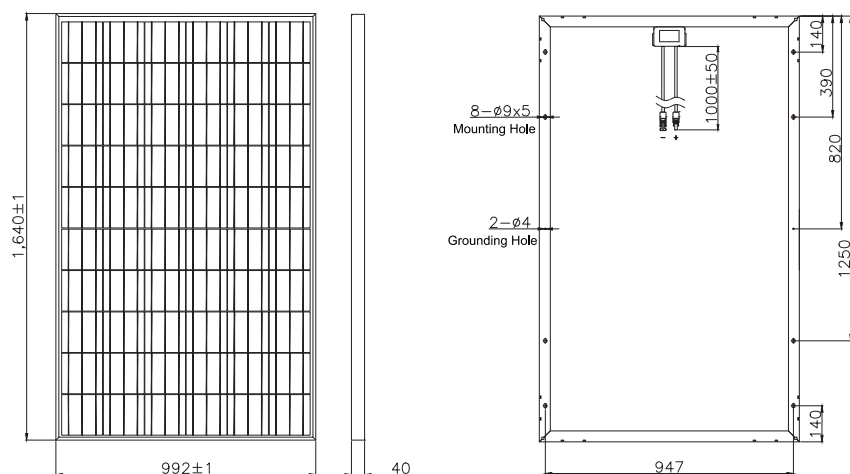
**OUR PRODUCTS:**

**Monocrystalline Modules**  
OPTIMUS SERIES 60 cell  
OPTIMUS SERIES 72 cell

**Multicrystalline Modules**  
MV SERIES 60 cell  
MV SERIES 72 cell

**Monocrystalline Cells**  
19%+ efficiency

**Balance of Systems Solutions (BOSS)**  
Racking, Inverters, Batteries, Energy Storage Appliances and EV Chargers



## ELECTRICAL DATA (NOMINAL)

The rated power may only vary by -0/+4.99Wp and all other electrical parameters by ± 5%

Power Classification	Pmax (W)	240	245	250
Module Efficiency	%	14.8	15.1	15.4
MV™ Series Model Number	MVX	240-60-5-701	245-60-5-701	250-60-5-701
Voltage at Max. Power Point	Vmp (V)	29.55	30.06	30.56
Current at Max. Power Point	Imp (A)	8.11	8.15	8.18
Open Circuit Voltage	Voc (V)	37.7	37.8	37.9
Short Circuit Current	Isc (A)	8.89	8.94	8.97

The electrical data apply to standard test conditions (STC): Irradiance of 1000 W/m<sup>2</sup> with AM 1.5 spectra at 25°C.

## DIMENSIONS AND WEIGHT

Cells / Module	60 (6x10)
Module Dimensions	1640 x 992 mm (64.56 in. x 39.05 in.)
Module Thickness (Depth)	40 mm (1.57 in.)
Approximate Weight	19 kg (41.88 lbs.)

## CHARACTERISTIC DATA

Type of Solar Cell	Multicrystalline silicon cells 156 mm x 156 mm (6 in.)
Frame	Silver anodized aluminum alloy
Glass	Tempered and low-iron
Junction Box	NEMA IP65 rated; 6 internal bypass diodes
Cable & Connectors	4mm <sup>2</sup> cable with MC4 compatible connectors; cable length approximately 1000mm

## TEMPERATURE COEFFICIENTS

Voltage	$\beta$ , Voc (%/°C)	-0.340
Current	$\alpha$ , Isc (%/°C)	+0.045
Power	$\gamma$ , Pmax (%/°C)	-0.470
NOCT Avg	(+/- 2 °C)	45.0

## LIMITS

Max. System Voltage	1000 VDC for IEC (600 VDC for UL)
Operating Module Temperature	-40° C to +90° C
Storm Resistance/Static Load <sup>1</sup>	Withstands mechanical loads up to 5400 Pa; hail and wind resistant

Suniva® reserves the right to change the data at any time. <sup>1</sup>Certifications pending. View manual and warranty at suniva.com. SAMD\_0031

### Headquarters

5765 Peachtree Industrial Blvd.,  
Norcross, Georgia 30092 USA  
Tel: +1 404 477 2700

[www.suniva.com](http://www.suniva.com)



Please recycle.